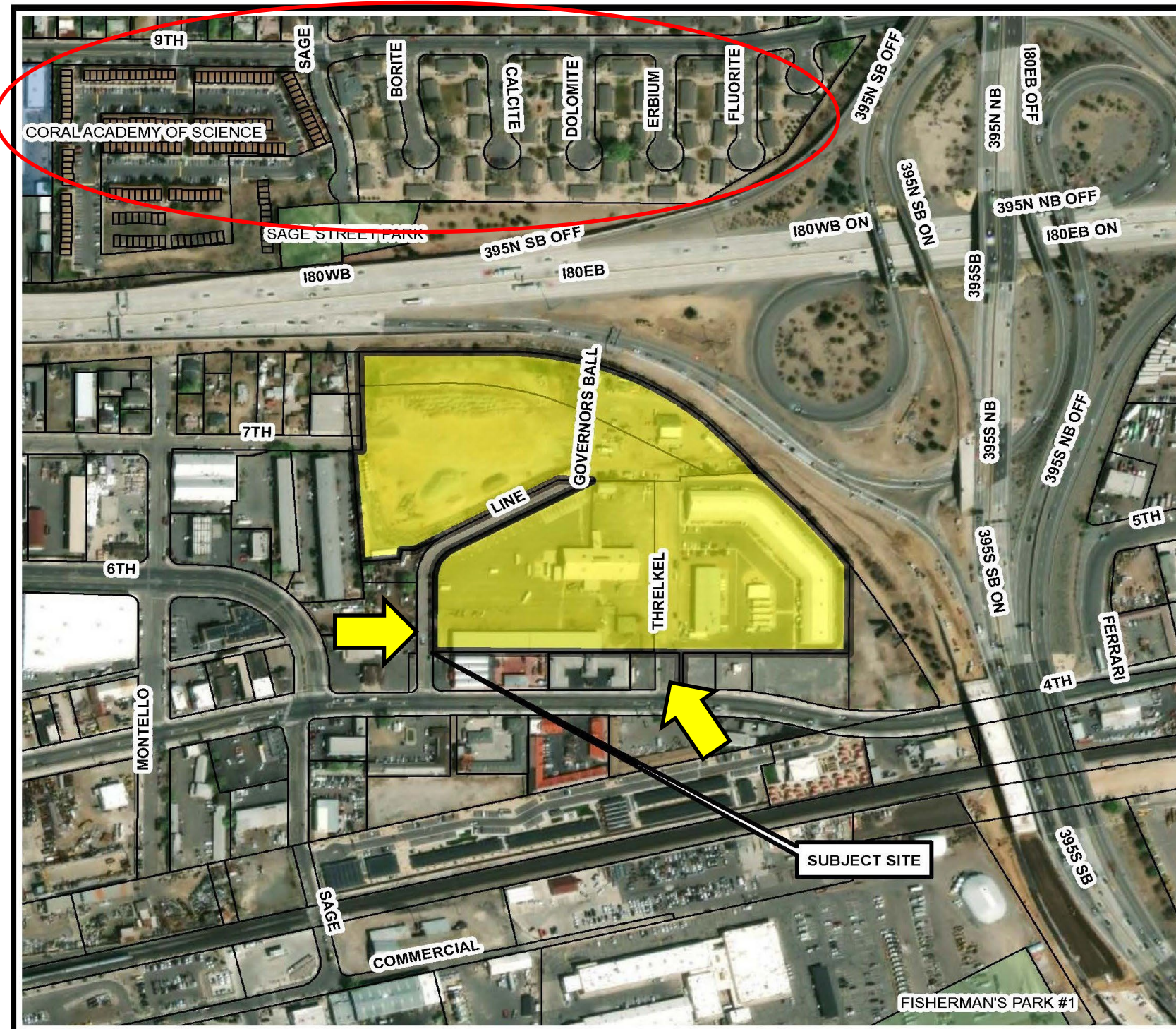


LDC23-00014 (Washoe County CARES Campus)

*Reno Planning Commission
November 2, 2022*





Project Information

Site Size: ±16.58 acre

Request:

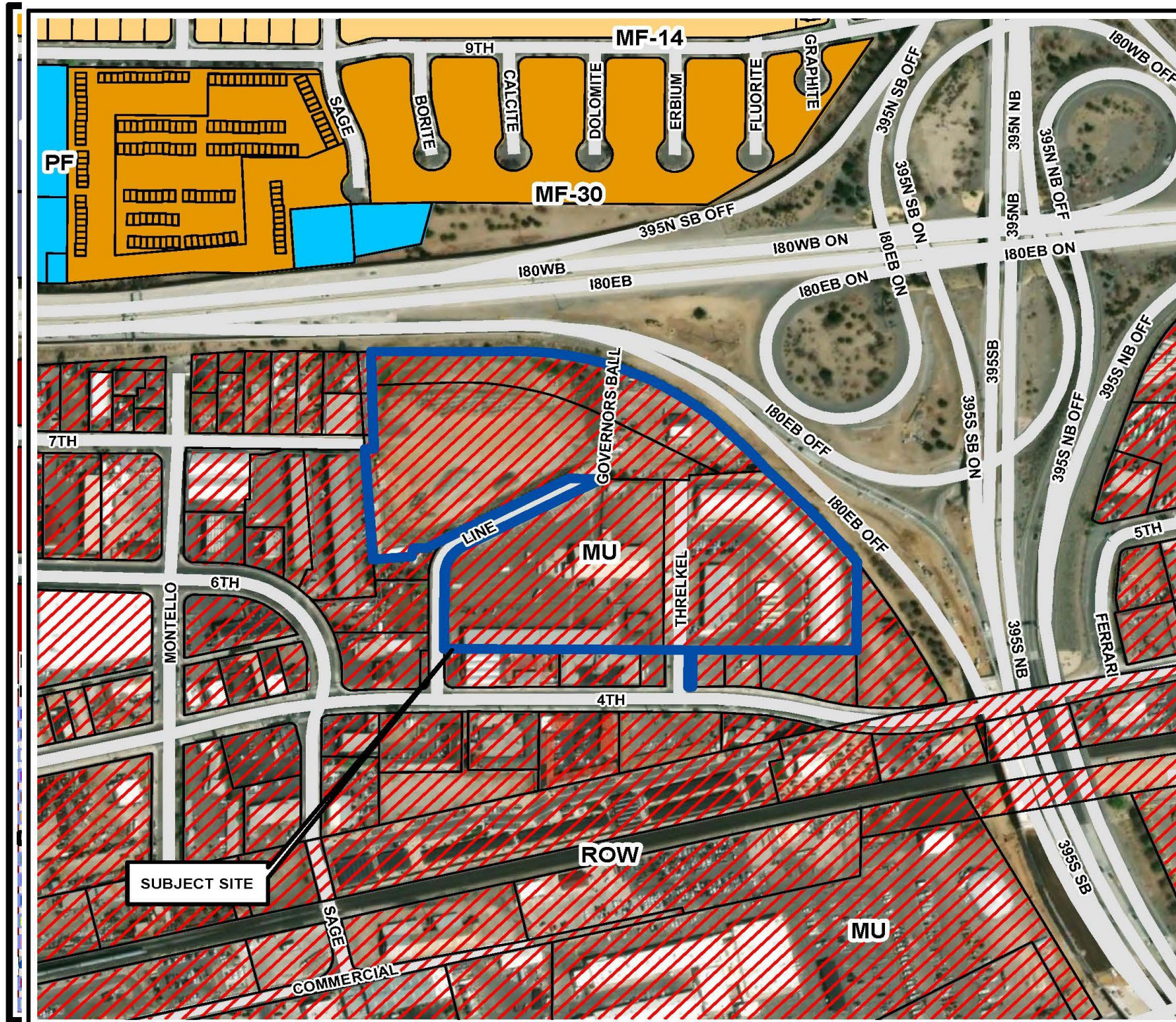
- Conditional Use Permit

LDC21-00025 (Nevada Cares Campus)

LDC22-00033 (Washoe County Safe Camp)

Key Issues:

- Safety and Security
- Compatibility



REIMAGINE RENO

planning for the future

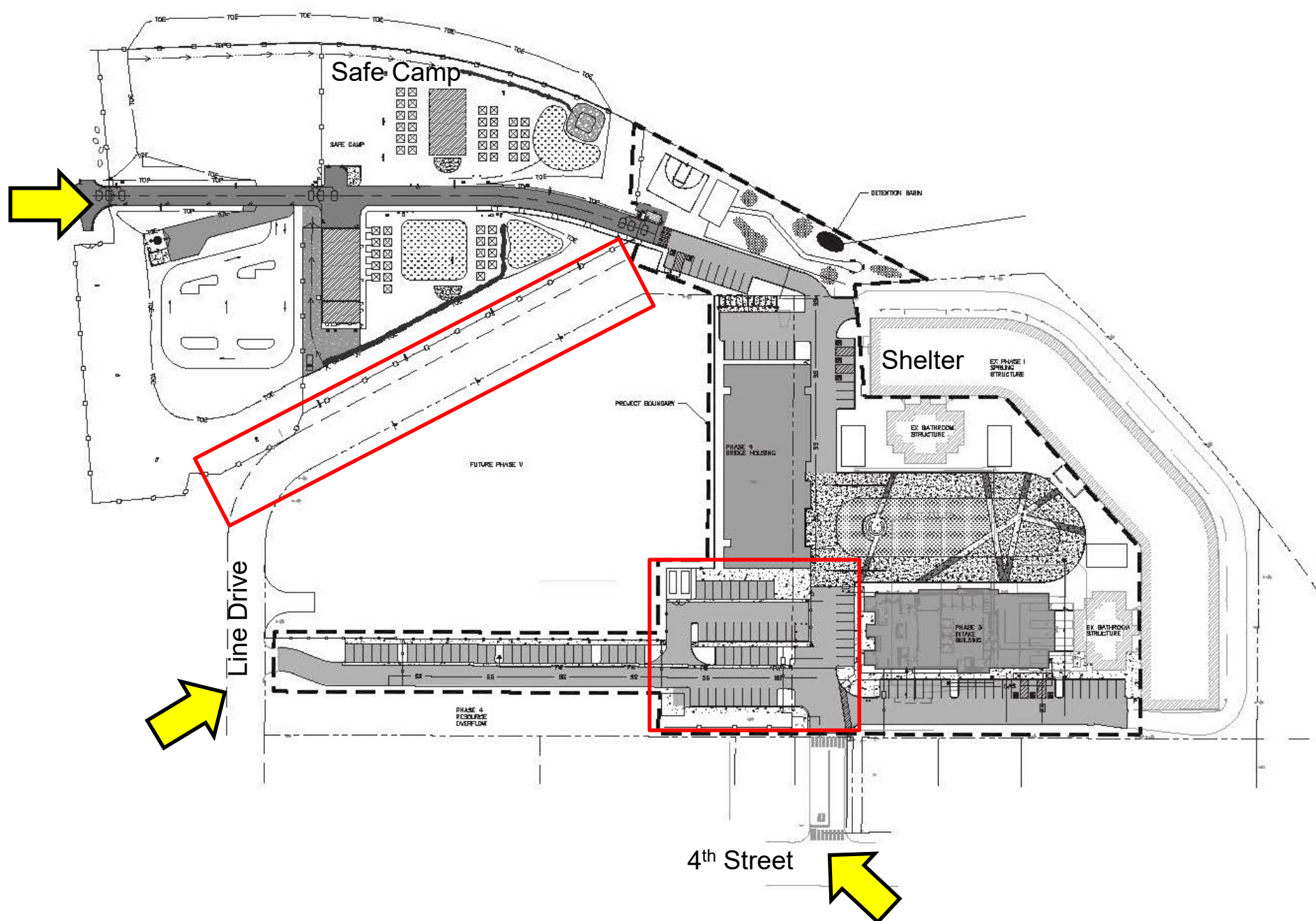
- 4.1G: Regional Housing Incentives
- 4.5A: Connectivity and Access
- 5.4C: Transit-Oriented/Transit Supportive Development
- 6.4: Encourage Health and Wellness through Access, Education, and Prevention.
- 6.4A: Coordinated Approach
- 6.4B: Continuum of Services and Programs
- 6.4C: Homeless Resources
- 6.4F: Funding Priorities
- 8.6C: Partnerships

— ZONING CODE —

RENOVATION

Achieving ReImagine Reno

Reno Municipal Code exempts homeless facilities from conforming to design standards for the associated base and overlay zones.



Phased Design:

1. Shelter
2. Safe Camp / Restrooms
3. Intake and Resources
4. Bridge Housing/ Recreation
5. Support Housing

Controlled access points/staging

Abandonment of a portion Line Drive

Security fencing and gates
(vandal proof)



Conditional Use Permit Findings

CUP Findings	Staff Review and Analysis
Compatible design	✓ Yes
Consistent with development standards	✓ Yes
Public services and utilities are available	✓ Yes
Characteristics are compatible	✓ Yes
Not detrimental to public health, safety, or welfare	✓ Yes

Recommended Motion

Based upon compliance with the applicable findings, I move to approve the Conditional Use Permit subject to conditions listed in the staff report.